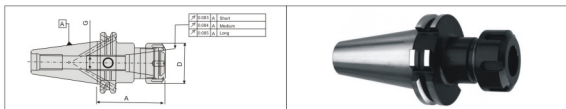


ER type Collet Chuck DIN 6499



Balanced for G6.3 @ 8,000 rpm

Taper Size	Specification	Collet Type	Range	D	A	G	Coolant Supply	Kg
SK 40	CCH-SK40-ER16-70	ER 16	1-10	28	70	M10	Form*AD/B*	1.0
	CCH-SK40-ER20-70	ER 20	1-13	34	70	M12	Form*AD/B*	1.1
	CCH-SK40-ER25-70	ER 25	2-16	42	70	M16	Form*AD/B*	1.1
	CCH-SK40-ER32-70	ER 32	2-20	50	70	M22X1.5	Form*AD/B*	1.2
	CCH-SK40-ER40-80	ER 40	3-26	63	80	M22X1.5	Form*AD/B*	1.5
	CCH-SK40-ER16-100	ER 16	1-10	28	100	M10	Form*AD/B*	1.2
	CCH-SK40-ER20-100	ER 20	1-13	34	70	M12	Form*AD/B*	1.3
	CCH-SK40-ER25-100	ER 25	2-16	42	100	M16	Form*AD/B*	1.3
	CCH-SK40-ER32-100	ER 32	2-20	50	100	M22X1.5	Form*AD/B*	1.5
	CCH-SK40-ER40-100	ER 40	3-26	63	100	M22X1.5	Form*AD/B*	1.8
SK 50	CCH-SK40-ER25-160	ER 25	2-16	42	160	M16	Form*AD/B*	1.7
	CCH-SK40-ER32-160	ER 32	2-20	50	160	M22X1.5	Form*AD/B*	2.0
	CCH-SK50-ER25-70	ER 25	2-16	42	70	M16	Form*AD/B*	3.0
	CCH-SK50-ER32-70	ER 32	2-20	50	70	M22X1.5	Form*AD/B*	3.0
	CCH-SK50-ER40-80	ER 40	3-26	63	80	M22X1.5	Form*AD/B*	3.3
	CCH-SK50-ER16-100	ER 16	1-10	28	100	M10	Form*AD/B*	3.1
	CCH-SK50-ER25-100	ER 25	2-16	42	100	M16	Form*AD/B*	3.2
	CCH-SK50-ER32-100	ER 32	2-20	50	100	M22X1.5	Form*AD/B*	3.2
	CCH-SK50-ER40-100	ER 40	3-26	63	100	M22X1.5	Form*AD/B*	4.5
	CCH-SK50-ER25-160	ER 25	2-16	42	160	M16	Form*AD/B*	3.7
CCH-SK50-ER32-160	ER 32	2-20	50	160	M22X1.5	Form*AD/B*	4.3	

- Includes : Clamping nut & adjusting screw
- Special GPL Holders offered on request

Spare Parts & Accessories



Pull Stud
Page No. 22



ER-Collet
Page No. 20

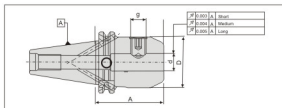


Wrench
Page No. 21



Clamping Nut
Page No. 23

"Weldon" End Mill Holder DIN 1835-B



Balanced for G6.3 @ 8,000 rpm

Taper Size	Specification	d	D	A	g	Coolant Supply	Kg
SK 40	EMH-SK40-32-65*	32	50	65	M16	Form "AD"	1.2
	EMH-SK40-06-50	6	25	50	M6	Form "AD/B"	1.0
	EMH-SK40-08-50	8	28	50	M8	Form "AD/B"	1.0
	EMH-SK40-10-50	10	35	50	M10	Form "AD/B"	1.1
	EMH-SK40-12-50	12	42	50	M12	Form "AD/B"	1.2
	EMH-SK40-14-50	14	44	50	M12	Form "AD/B"	1.2
	EMH-SK40-16-63	16	48	63	M14	Form "AD/B"	1.2
	EMH-SK40-18-63	18	50	63	M14	Form "AD/B"	1.4
	EMH-SK40-20-63	20	50	63	M16	Form "AD/B"	1.5
	EMH-SK40-25-100	25	65	100	M18	Form "AD/B"	2.7
	EMH-SK40-32-100	32	72	100	M20	Form "AD/B"	2.5
	EMH-SK40-40-120	40	80	120	M20	Form "AD/B"	3.0
	EMH-SK40-06-100	6	25	100	M6	Form "AD/B"	1.2
	EMH-SK40-08-100	8	28	100	M8	Form "AD/B"	1.2
	EMH-SK40-10-100	10	35	100	M10	Form "AD/B"	1.4
	EMH-SK40-12-100	12	42	100	M12	Form "AD/B"	1.6
	EMH-SK40-16-100	16	48	100	M14	Form "AD/B"	1.7
	EMH-SK40-20-100	20	52	100	M16	Form "AD/B"	2.0
SK 50	EMH-SK50-06-63	6	25	63	M6	Form "AD/B"	2.7
	EMH-SK50-08-63	8	28	63	M8	Form "AD/B"	2.7
	EMH-SK50-10-63	10	35	63	M10	Form "AD/B"	2.9
	EMH-SK50-12-63	12	42	63	M12	Form "AD/B"	3.0
	EMH-SK50-16-63	16	48	63	M14	Form "AD/B"	3.0
	EMH-SK50-18-63	18	50	63	M14	Form "AD/B"	3.0
	EMH-SK50-20-63	20	52	63	M16	Form "AD/B"	3.1
	EMH-SK50-25-80	25	65	80	M18	Form "AD/B"	3.7
	EMH-SK50-32-100	32	72	100	M20	Form "AD/B"	5.1
	EMH-SK50-40-100	40	80	100	M20	Form "AD/B"	6.5
	EMH-SK50-06-100	6	25	100	M6	Form "AD/B"	3.0
	EMH-SK50-08-100	8	28	100	M8	Form "AD/B"	3.0
	EMH-SK50-10-100	10	35	100	M10	Form "AD/B"	3.2
	EMH-SK50-12-100	12	42	100	M12	Form "AD/B"	3.4
	EMH-SK50-16-100	16	48	100	M14	Form "AD/B"	3.6
	EMH-SK50-20-100	20	52	100	M16	Form "AD/B"	3.7
	EMH-SK50-25-120	25	65	120	M18	Form "AD/B"	4.3
	EMH-SK50-20-160	20	52	160	M16	Form "AD/B"	4.8
EMH-SK50-25-160	25	65	160	M18	Form "AD/B"	6.0	
EMH-SK50-32-160	32	72	160	M20	Form "AD/B"	6.6	

- Includes : Locking screw
- Special GPL Holders offered on request

Spare Parts & Accessories

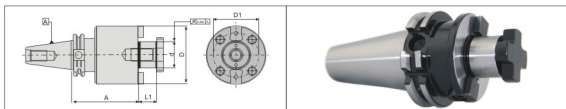


Pull Stud
Page No. 22



Locking Screw
Page No. 21

Shell Mill Holder with Drive Key DIN 6357



Balanced for G6.3 @ 8,000 rpm

Taper Size	Specification	d	D	A	L1	D1	Coolant Supply	Kg
SK 40	SMH-SK40-27-40	27	50	40	21	66.7	Form *AD/B*	1.1
	SMH-SK40-32-50	32	78	50	24	66.7	Form *AD/B*	1.3
	SMH-SK40-40-50	40	88	50	27	66.7	Form *AD/B*	1.6
	SMH-SK40-16-100	16	38	100	17	66.7	Form *AD/B*	1.8
	SMH-SK40-22-100	22	48	100	19	66.7	Form *AD/B*	2.1
	SMH-SK40-27-100	27	58	100	21	66.7	Form *AD/B*	2.6
	SMH-SK40-32-100	32	78	100	24	66.7	Form *AD/B*	3.6
	SMH-SK40-40-100	40	88	100	27	66.7	Form *AD/B*	4.3
	SMH-SK40-22-160	22	48	160	19	66.7	Form *AD/B*	2.7
	SK 50	SMH-SK50-16-44	16	38	44	17	66.7	Form *AD/B*
SMH-SK50-22-44		22	48	44	19	66.7	Form *AD/B*	3
SMH-SK50-27-44		27	50	44	21	66.7	Form *AD/B*	3.2
SMH-SK50-32-40		32	78	40	24	66.7	Form *AD/B*	4
SMH-SK50-40-50		40	88	50	27	66.7	Form *AD/B*	4.2
SMH-SK50-16-100		16	38	100	17	66.7	Form *AD/B*	3.6
SMH-SK50-22-100		22	48	100	19	66.7	Form *AD/B*	4
SMH-SK50-27-100		27	50	100	21	66.7	Form *AD/B*	4.4
SMH-SK50-32-100		32	78	100	24	66.7	Form *AD/B*	5.2
SMH-SK50-40-100		40	88	100	27	66.7	Form *AD/B*	6
SMH-SK50-22-160	22	48	160	19	66.7	Form *AD/B*	4.2	
SMH-SK50-27-160	27	50	160	21	66.7	Form *AD/B*	5.3	

- Coolant bore on the pilot face (holder with Form *AD/B*) as standard for all holders
- Includes : Drive keys and clamping screw
- Special GPL Holders offered on request

Spare Parts & Accessories



Pull Stud
Page No. 22



Drive Key
Page No. 24

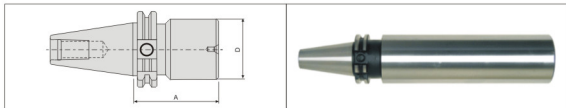


Spanner
Page No. 23



Clamping Screw
Page No. 23

Boring Bar Blanks



Taper Size	Specification	D (mm)	A (mm)	Coolant Supply	N/W (Kg)
SK 40	BBB-SK40-063-250	63	250	Form *AD/B*	6.5
	BBB-SK40-080-250	63	250	Form *AD/B*	6.5
SK 50	BBB-SK50-080-250	63.5	250	Form *AD/B*	9.1
	BBB-SK50-100-300	63.5	300	Form *AD/B*	9.5

- Includes : Steep taper and flange hardened, body left soft.
- Special GPL Holders offered on request

Morse Taper Holder with Tang DIN 6357



Balanced for G6.3 @ 8,000 rpm

Taper Size	Specification	d	A	Kg
SK 30	MTH-SK30-MT1-050	MT1	50	0.4
	MTH-SK30-MT2-063	MT2	63	0.5
	MTH-SK30-MT3-070	MT3	70	0.7
SK40	MTH-SK40-MT1-050	MT1	50	1.0
	MTH-SK40-MT1-063	MT1	63	1.3
	MTH-SK40-MT1-100	MT1	100	1.5
	MTH-SK40-MT2-050	MT2	50	1.1
	MTH-SK40-MT2-063	MT2	63	1.2
	MTH-SK40-MT2-100	MT2	100	1.3
	MTH-SK40-MT3-063	MT3	63	1.1
	MTH-SK40-MT3-100	MT3	100	1.3
	MTH-SK40-MT3-120	MT3	120	1.4
	MTH-SK40-MT4-100	MT4	100	1.3
SK 50	MTH-SK50-MT1-050	MT1	50	3.5
	MTH-SK50-MT1-063	MT1	63	3.6
	MTH-SK50-MT1-100	MT1	100	3.9
	MTH-SK50-MT2-050	MT2	50	3.5
	MTH-SK50-MT2-063	MT2	63	3.6
	MTH-SK50-MT2-100	MT2	100	3.9
	MTH-SK50-MT3-063	MT3	63	3.5
	MTH-SK40-MT3-100	MT3	100	
	MTH-SK40-MT3-120	MT3	120	
	MTH-SK50-MT4-100	MT4	100	3.6
MTH-SK50-MT5-120	MT5	120	3.9	

• Special GPL Holders offered on request

Spare Parts & Accessories

Pull Stud
Page No. 22

Shrink Fit Holder



Balanced for G6.3 @ 8,000 rpm

Taper Size	Specification	d	A	Kg
BT 40	SFH-SK40-06-100	6	100	1.3
	SFH-SK40-08-100	8	100	1.3
	SFH-SK40-10-100	10	100	1.4
	SFH-SK40-12-100	12	100	1.4
	SFH-SK40-14-100	14	100	1.5
	SFH-SK40-16-100	16	100	1.5
	SFH-SK40-18-100	18	100	1.7
	SFH-SK40-20-100	20	100	1.7
BT 50	SFH-SK40-25-100	25	100	1.7
	SFH-SK50-08-120	8	120	3.8
	SFH-SK50-10-120	10	120	3.8
	SFH-SK50-12-120	12	120	3.9
	SFH-SK50-14-120	14	120	3.9
	SFH-SK50-16-120	16	120	4.0
	SFH-SK50-18-120	18	120	4.0
	SFH-SK50-20-120	20	120	4.1
SFH-SK50-25-120	25	120	4.1	
SFH-SK50-32-120	32	120	4.3	

• Special Sizes offered on request

Spare Parts & Accessories

Pull Stud
Page No. 22