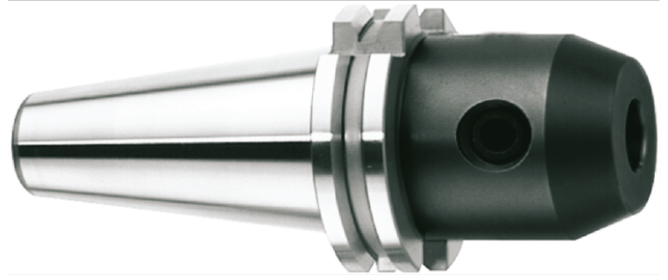
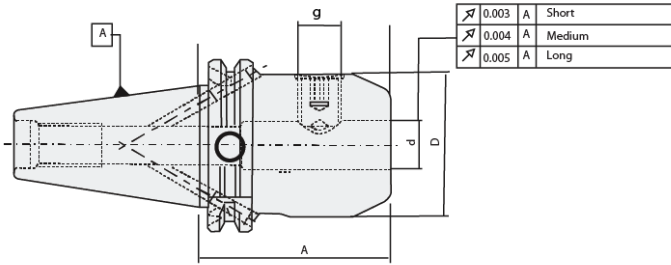


# "Weldon" End Mill Holder DIN 1835-B



Balanced for G6.3 @ 8,000 rpm

Taper Size	Specification	d	D	A	g	Coolant Supply	Kg
SK 40	EMH-SK40-32-65*	32	50	65	M16	Form "AD"	1.2
	EMH-SK40-06-50	6	25	50	M6	Form "AD/B"	1.0
	EMH-SK40-08-50	8	28	50	M8	Form "AD/B"	1.0
	EMH-SK40-10-50	10	35	50	M10	Form "AD/B"	1.1
	EMH-SK40-12-50	12	42	50	M12	Form "AD/B"	1.2
	EMH-SK40-14-50	14	44	50	M12	Form "AD/B"	1.2
	EMH-SK40-16-63	16	48	63	M14	Form "AD/B"	1.2
	EMH-SK40-18-63	18	50	63	M14	Form "AD/B"	1.4
	EMH-SK40-20-63	20	50	63	M16	Form "AD/B"	1.5
	EMH-SK40-25-100	25	65	100	M18	Form "AD/B"	2.7
	EMH-SK40-32-100	32	72	100	M20	Form "AD/B"	2.5
	EMH-SK40-40-120	40	80	120	M20	Form "AD/B"	3.0
	EMH-SK40-06-100	6	25	100	M6	Form "AD/B"	1.2
	EMH-SK40-08-100	8	28	100	M8	Form "AD/B"	1.2
	EMH-SK40-10-100	10	35	100	M10	Form "AD/B"	1.4
	EMH-SK40-12-100	12	42	100	M12	Form "AD/B"	1.6
	EMH-SK40-16-100	16	48	100	M14	Form "AD/B"	1.7
EMH-SK40-20-100	20	52	100	M16	Form "AD/B"	2.0	
SK 50	EMH-SK50-06-63	6	25	63	M6	Form "AD/B"	2.7
	EMH-SK50-08-63	8	28	63	M8	Form "AD/B"	2.7
	EMH-SK50-10-63	10	35	63	M10	Form "AD/B"	2.9
	EMH-SK50-12-63	12	42	63	M12	Form "AD/B"	3.0
	EMH-SK50-16-63	16	48	63	M14	Form "AD/B"	3.0
	EMH-SK50-18-63	18	50	63	M14	Form "AD/B"	3.0
	EMH-SK50-20-63	20	52	63	M16	Form "AD/B"	3.1
	EMH-SK50-25-80	25	65	80	M18	Form "AD/B"	3.7
	EMH-SK50-32-100	32	72	100	M20	Form "AD/B"	5.1
	EMH-SK50-40-100	40	80	100	M20	Form "AD/B"	6.5
	EMH-SK50-06-100	6	25	100	M6	Form "AD/B"	3.0
	EMH-SK50-08-100	8	28	100	M8	Form "AD/B"	3.0
	EMH-SK50-10-100	10	35	100	M10	Form "AD/B"	3.2
	EMH-SK50-12-100	12	42	100	M12	Form "AD/B"	3.4
	EMH-SK50-16-100	16	48	100	M14	Form "AD/B"	3.6
	EMH-SK50-20-100	20	52	100	M16	Form "AD/B"	3.7
	EMH-SK50-25-120	25	65	120	M18	Form "AD/B"	4.3
EMH-SK50-20-160	20	52	160	M16	Form "AD/B"	4.8	
EMH-SK50-25-160	25	65	160	M18	Form "AD/B"	6.0	
EMH-SK50-32-160	32	72	160	M20	Form "AD/B"	6.6	

- Includes : Locking screw
- Special GPL Holders offered on request

Spare Parts & Accessories



pull stud



Locking screw