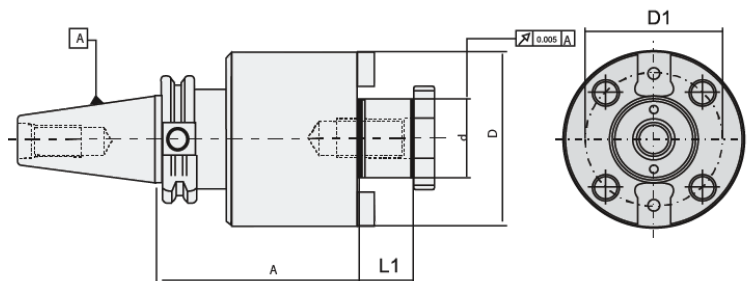


# Shell Mill Holder with Drive Key DIN 6357



Balanced for G6.3 @ 8,000 rpm

Taper Size	Specification	d	D	A	L1	D1	Coolant Supply	Kg
SK 40	SMH-SK40-27-40	27	50	40	21	66.7	Form "AD/B"	1.1
	SMH-SK40-32-50	32	78	50	24	66.7	Form "AD/B"	1.3
	SMH-SK40-40-50	40	88	50	27	66.7	Form "AD/B"	1.6
	SMH-SK40-16-100	16	38	100	17	66.7	Form "AD/B"	1.8
	SMH-SK40-22-100	22	48	100	19	66.7	Form "AD/B"	2.1
	SMH-SK40-27-100	27	58	100	21	66.7	Form "AD/B"	2.6
	SMH-SK40-32-100	32	78	100	24	66.7	Form "AD/B"	3.6
	SMH-SK40-40-100	40	88	100	27	66.7	Form "AD/B"	4.3
	SMH-SK40-22-160	22	48	160	19	66.7	Form "AD/B"	2.7
SK 50	SMH-SK50-16-44	16	38	44	17	66.7	Form "AD/B"	2.8
	SMH-SK50-22-44	22	48	44	19	66.7	Form "AD/B"	3
	SMH-SK50-27-44	27	50	44	21	66.7	Form "AD/B"	3.2
	SMH-SK50-32-40	32	78	40	24	66.7	Form "AD/B"	4
	SMH-SK50-40-50	40	88	50	27	66.7	Form "AD/B"	4.2
	SMH-SK50-16-100	16	38	100	17	66.7	Form "AD/B"	3.6
	SMH-SK50-22-100	22	48	100	19	66.7	Form "AD/B"	4
	SMH-SK50-27-100	27	50	100	21	66.7	Form "AD/B"	4.4
	SMH-SK50-32-100	32	78	100	24	66.7	Form "AD/B"	5.2
	SMH-SK50-40-100	40	88	100	27	66.7	Form "AD/B"	6
	SMH-SK50-22-160	22	48	160	19	66.7	Form "AD/B"	4.2
SMH-SK50-27-160	27	50	160	21	66.7	Form "AD/B"	5.3	

- Coolant bore on the pilot face (holder with Form "AD/B") as standard for all holders
- Includes : Drive keys and clamping screw
- Special GPL Holders offered on request

## Spare Parts & Accessories



pull stud



Drive Key



Spanner



Clamping Screw