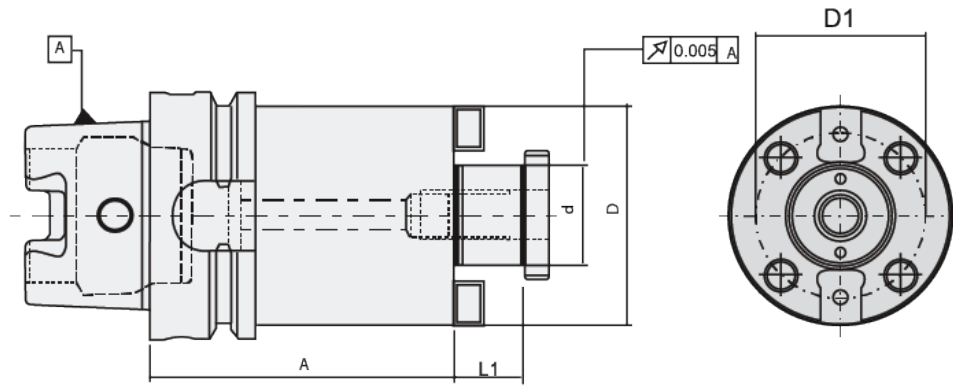


Shell Mill Holder with Drive Key DIN 6357



Fine balanced holders

Balanced for G6.3 @ 8,000 rpm

Taper Size	Specification	d	D	A	L1	D1	Coolant Supply	Kg
HSK-A63	SMH-HSK-A63-16-50	16	38	50	17	66.7	Form "AD"	1.1
	SMH-HSK-A63-22-50	22	48	50	19	66.7	Form "AD"	1.1
	SMH-HSK-A63-27-60	27	58	60	21	66.7	Form "AD"	1.3
	SMH-HSK-A63-32-60	32	78	60	24	66.7	Form "AD"	1.4
	SMH-HSK-A63-40-60	40	88	60	27	66.7	Form "AD"	1.9
	SMH-HSK-A63-16-100	16	38	100	17	66.7	Form "AD"	1.4
	SMH-HSK-A63-22-100	22	48	100	19	66.7	Form "AD"	1.8
	SMH-HSK-A63-27-100	27	58	100	21	66.7	Form "AD"	2.0
HSK-A100	SMH-HSK-A100-22-50	22	48	50	19	66.7	Form "AD"	2.5
	SMH-HSK-A100-27-50	27	58	50	21	66.7	Form "AD"	2.7
	SMH-HSK-A100-32-50	32	78	50	24	66.7	Form "AD"	2.8
	SMH-HSK-A100-40-60	40	88	60	27	66.7	Form "AD"	3.8

- Please order coolant tube separately
- Includes : Locking screw
- G2.5 @ 15,000 rpm on request

Spare Parts & Accessories



Spanner



Clamping Screw



Drive Key