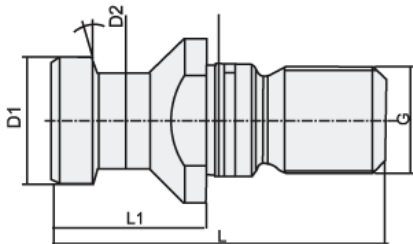


Pull Stud DIN 69872 A
Type B (Without Through Hole,
Incl. O-Ring)



Taper Size	Specification	G	Ø D 1	Ø D 2	L	L 1	⊖
SK 30	PS-SK30-15 O	M12	13.0	9	44.0	24.0	15°
SK 40	PS-SK40-15 O	M16	19.0	14.0	54.0	26.0	15°
SK 50	PS-SK50-15 O	M24	28.0	21.0	74.0	34.0	15°