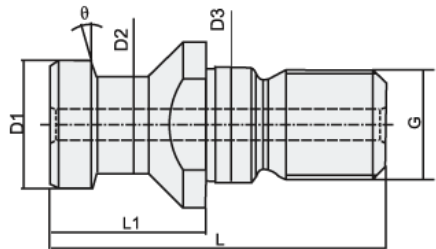


# Pull Stud DIN 69872 A Type A (With Through Hole, Without O-Ring)



Taper Size	Specification	G	Ø D 1	Ø D 2	Ø D 3	L	L 1	Θ
SK 30	PS-SK30-15 TH	M12	13.0	9.0	13	44.0	24.0	15°
SK 40	PS-SK40-15 TH	M16	19.0	14.0	17	54.0	26.0	15°
SK 50	PS-SK50-15 TH	M24	28.0	21.0	25	74.0	34.0	15°