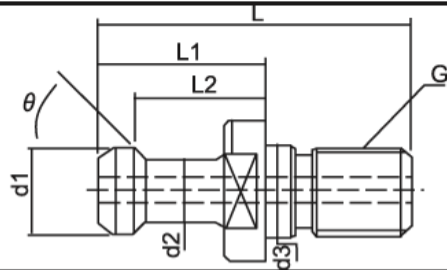


Pull Stud DIN 6339 Type (With Through Hole)



Taper Size	Specification	G	Ø D 1	Ø D 2	Ø D 3	L	L 1	⊖
BT 40	PS-BT40-45 TH	M16	15.0	10	17	60	28	45°
	PS-BT40-30 TH	M16	15.0	10	17	60	28	30°
	PS-BT40-0 TH	M16	15.0	10	17	60	28	0°
BT 50	PS-BT50-45 TH	M24	23.0	17	25	85	35	45°
	PS-BT50-30 TH	M24	23.0	17	25	85	35	30°
	PS-BT50-0 TH	M24	23.0	17	25	85	35	0°