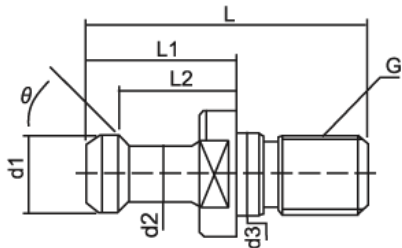


Pull Stud DIN 6339 Type (Without Through Hole, Without O-Ring)



Taper Size	Specification	G	Ø D 1	Ø D 2	Ø D 3	L	L 1	⊖
BT 30	PS-BT30-45	M12	11.0	7.0	12.5	43	18	45°
	PS-BT40-30	M12	11.0	7.0	12.5	43	18	30°
BT 40	PS-BT40-45	M16	15.0	10	17	60	28	45°
	PS-BT40-30	M16	15.0	10	17	60	28	30°
	PS-BT40-0	M16	15.0	10	17	60	28	0°
BT 50	PS-BT50-45	M24	23.0	17	25	85	35	45°
	PS-BT50-30	M24	23.0	17	25	85	35	30°
	PS-BT50-0	M24	23.0	17	25	85	35	0°