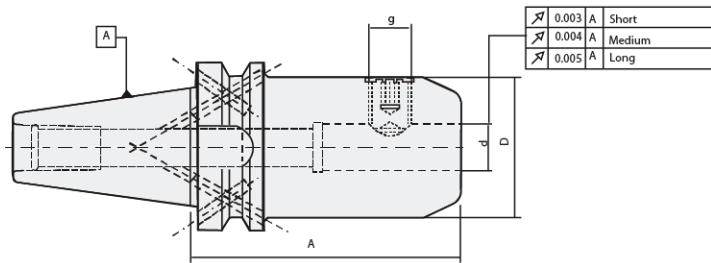


"Weldon" End Mill Holder DIN 1835-B



Balanced for G6.3 @ 8,000 rpm

Taper Size	Specification	d	D	A	g	Coolant Supply	Kg
BT 30	EMH-BT30-06-50	6	25	50	M6	Form "AD"	0.6
	EMH-BT30-08-50	8	28	50	M8	Form "AD"	0.6
	EMH-BT30-10-50	10	35	50	M10	Form "AD"	0.8
	EMH-BT30-12-50	12	42	50	M12	Form "AD"	0.9
	EMH-BT30-16-63	16	48	63	M14	Form "AD"	0.9
	EMH-BT30-20-63	20	52	63	M16	Form "AD"	1.0
BT 40	EMH-BT40-06-50	6	25	50	M6	Form "AD/B"	1.0
	EMH-BT40-08-50	8	28	50	M8	Form "AD/B"	1.0
	EMH-BT40-10-63	10	35	63	M10	Form "AD/B"	1.1
	EMH-BT40-12-63	12	42	63	M12	Form "AD/B"	1.2
	EMH-BT40-16-63	16	48	63	M14	Form "AD/B"	1.2
	EMH-BT40-18-63	18	50	63	M14	Form "AD/B"	1.4
	EMH-BT40-20-63	20	52	63	M16	Form "AD/B"	1.5
	EMH-BT40-25-90	25	65	90	M18	Form "AD/B"	2.0
	EMH-BT40-32-100	32	72	100	M20	Form "AD/B"	2.5
	EMH-BT40-40-120	40	80	120	M20	Form "AD/B"	3.0
	EMH-BT40-06-100	6	25	100	M6	Form "AD/B"	1.2
	EMH-BT40-08-100	8	28	100	M8	Form "AD/B"	1.2
	EMH-BT40-10-100	10	35	100	M10	Form "AD/B"	1.4
	EMH-BT40-12-100	12	42	100	M12	Form "AD/B"	1.6
EMH-BT40-16-100	16	48	100	M14	Form "AD/B"	1.7	
EMH-BT40-20-100	20	52	100	M16	Form "AD/B"	2.0	
EMH-BT40-16-160	16	48	160	M14	Form "AD/B"	2.6	
EMH-BT40-20-160	20	52	160	M16	Form "AD/B"	2.9	
EMH-BT40-25-160	25	65	160	M18	Form "AD/B"	3.8	
BT 50	EMH-BT50-06-63	6	25	63	M6	Form "AD/B"	3.5
	EMH-BT50-08-63	8	28	63	M8	Form "AD/B"	3.6
	EMH-BT50-10-63	10	35	63	M10	Form "AD/B"	3.7
	EMH-BT50-12-80	12	42	80	M12	Form "AD/B"	3.9
	EMH-BT50-16-80	16	48	80	M14	Form "AD/B"	3.9
	EMH-BT50-18-80	18	50	80	M14	Form "AD/B"	4.0
	EMH-BT50-20-80	20	52	80	M16	Form "AD/B"	4.0
	EMH-BT50-25-100	25	65	100	M18	Form "AD/B"	4.7
	EMH-BT50-32-105	32	72	105	M20	Form "AD/B"	5.1
	EMH-BT50-40-110	40	80	110	M20	Form "AD/B"	6.5
	EMH-BT50-06-100	6	25	100	M6	Form "AD/B"	3.7
	EMH-BT50-08-100	8	28	100	M8	Form "AD/B"	3.7
	EMH-BT50-10-100	10	35	100	M10	Form "AD/B"	3.9
	EMH-BT50-12-100	12	42	100	M12	Form "AD/B"	4.1
	EMH-BT50-16-100	16	48	100	M14	Form "AD/B"	4.2
	EMH-BT50-20-100	20	52	100	M16	Form "AD/B"	4.3
	EMH-BT50-20-160	20	52	160	M16	Form "AD/B"	5.2
	EMH-BT50-25-160	25	65	160	M18	Form "AD/B"	6.1
EMH-BT50-32-160	32	72	160	M20	Form "AD/B"	6.7	

- Includes : Locking screw
- Special GPL Holders offered on request

Spare Parts & Accessories



pull stud



Locking screw