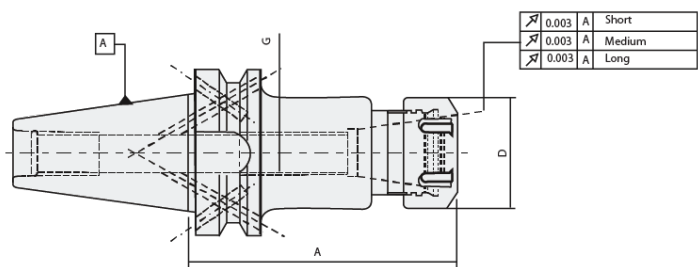


ER type Collet Chuck DIN 6499



Balanced for G6.3 @ 8,000 rpm

Taper Size	Specification	Collet Type	Range	D	A	G	Coolant Supply	Kg
BT 30	CCH-BT30-ER16-70	ER 16	1-10	28	70	M10	Form "AD"	0.7
	CCH-BT30-ER20-70	ER 20	1-13	34	70	M12	Form "AD"	0.9
	CCH-BT30-ER25-70	ER 25	2-16	42	70	M12	Form "AD"	0.6
	CCH-BT30-ER32-70	ER 32	2-20	50	70	M12	Form "AD"	0.8
	CCH-BT30-ER16-100	ER 16	1-10	28	100	M10	Form "AD"	0.7
	CCH-BT30-ER20-100	ER 20	1-13	34	100	M12	Form "AD"	1.3
	CCH-BT30-ER25-100	ER 25	2-16	42	100	M12	Form "AD"	0.6
BT 40	CCH-BT40-ER16-70	ER 16	1-10	28	70	M10	Form "AD/B"	1.0
	CCH-BT40-ER20-70	ER 20	1-13	34	70	M12	Form "AD/B"	1.2
	CCH-BT40-ER25-70	ER 25	2-16	42	70	M16	Form "AD/B"	1.0
	CCH-BT40-ER32-70	ER 32	2-20	50	70	M22X1.5	Form "AD/B"	1.2
	CCH-BT40-ER40-80	ER 40	3-26	63	80	M22X1.5	Form "AD/B"	1.2
	CCH-BT40-ER16-100	ER 16	1-10	28	100	M10	Form "AD/B"	1.2
	CCH-BT40-ER20-100	ER 20	1-13	34	100	M12	Form "AD/B"	1.4
	CCH-BT40-ER25-100	ER 25	2-16	42	100	M16	Form "AD/B"	1.4
	CCH-BT40-ER32-100	ER 32	2-20	50	100	M22X1.5	Form "AD/B"	1.5
	CCH-BT40-ER40-100	ER 40	3-26	63	100	M22X1.5	Form "AD/B"	1.8
	CCH-BT40-ER16-160	ER 16	1-10	28	160	M10	Form "AD/B"	1.6
	CCH-BT40-ER25-160	ER 25	2-16	42	160	M16	Form "AD/B"	2.1
	CCH-BT40-ER32-160	ER 32	2-20	50	160	M22X1.5	Form "AD/B"	2.5
CCH-BT40-ER40-160	ER 40	3-26	63	160	M22X1.5	Form "AD/B"	2.6	
BT 50	CCH-BT50-ER20-70	ER 20	1-13	34	70	M12	Form "AD/B"	4.0
	CCH-BT50-ER25-70	ER 25	2-16	42	70	M16	Form "AD/B"	3.4
	CCH-BT50-ER32-70	ER 32	2-20	50	70	M22X1.5	Form "AD/B"	3.5
	CCH-BT50-ER40-80	ER 40	3-26	63	80	M22X1.5	Form "AD/B"	3.6
	CCH-BT50-ER16-100	ER 16	1-10	28	100	M10	Form "AD/B"	3.6
	CCH-BT50-ER25-100	ER 25	2-16	42	100	M16	Form "AD/B"	3.8
	CCH-BT50-ER32-100	ER 32	2-20	50	100	M22X1.5	Form "AD/B"	3.9
	CCH-BT50-ER40-100	ER 40	3-26	63	100	M22X1.5	Form "AD/B"	3.8
	CCH-BT50-ER16-160	ER 16	1-10	28	160	M10	Form "AD/B"	4.1
	CCH-BT50-ER25-160	ER 25	2-16	42	160	M16	Form "AD/B"	4.1
	CCH-BT50-ER32-160	ER 32	2-20	50	160	M22X1.5	Form "AD/B"	4.6
	CCH-BT50-ER40-160	ER 40	3-26	63	160	M22X1.5	Form "AD/B"	4.6

- Includes : Clamping nut & adjusting screw
- Special GPL Holders offered on request

Spare Parts & Accessories



Pull stud



ER - Collet



Wrench



Clamping Nut