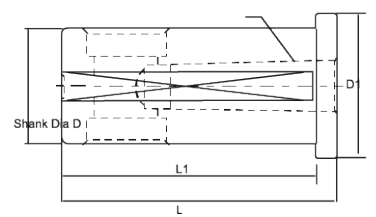
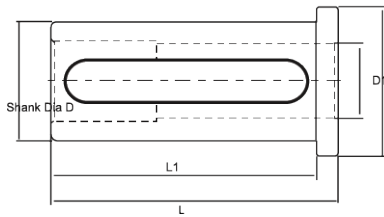
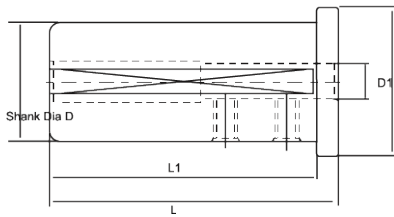


Boring Bar Sleeves



PART No.	d	D1	L1	L	Fig.	Kgs	Group
BBS 25	8	35	65	70	1	0.20	A
	10	35	65	70	1	0.20	A
	12	35	65	70	1	0.20	A
	16	35	65	70	2	0.10	A
	20	35	65	70	2	0.10	A
	MT1	35	65	76	3	0.20	A
	MT2	35	65	89	3	0.20	A
BBS 32	8	42	82	87	1	0.40	A
	10	42	82	87	1	0.50	A
	12	42	82	87	1	0.50	A
	16	42	82	87	2	0.40	A
	20	42	82	87	2	0.30	A
	25	42	82	87	2	0.20	A
	MT1	42	82	87	3	0.50	A
	MT2	42	82	89	3	0.40	A
	MT3	42	82	110	3	0.40	A
BBS 40	8	50	85	90	1	0.80	A
	10	50	85	90	1	0.80	A
	12	50	85	90	1	0.80	A
	16	50	85	90	2	0.60	A
	20	50	85	90	2	0.60	A
	25	50	85	90	2	0.40	A
	32	50	85	90	2	0.30	A
	MT1	50	85	90	3	0.80	A
	MT2	50	85	90	3	0.70	A
BBS 50	8	60	90	95	1	1.40	A
	10	60	90	95	1	1.40	A
	12	60	90	95	1	1.30	A
	16	60	90	95	2	1.20	A
	20	60	90	95	2	1.10	A
	25	60	90	95	2	1.00	A
	32	60	90	95	2	0.80	A
	40	60	90	95	2	0.50	A
	MT1	60	90	95	3	1.30	A
	MT2	60	90	95	3	1.30	A
	MT3	60	90	110	3	1.40	A