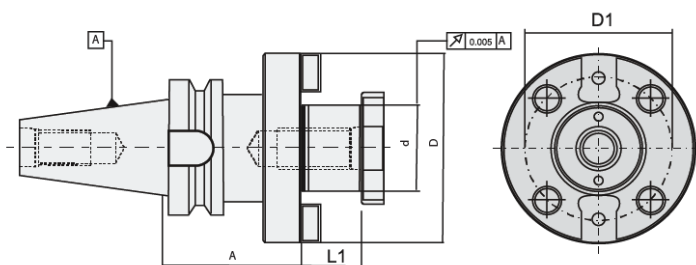


Shell Mill Holder with Drive Key DIN 6357



Balanced for G6.3 @ 8,000 rpm

Taper Size	Specification	d	D	A	L1	D1	Coolant Supply	Kg
BT 30	SMH-BT30-16-40	16	38	40	17	66.7	Form "A"	0.7
	SMH-BT30-22-40	22	48	40	19	66.7	Form "A"	0.9
	SMH-BT30-27-40	27	58	40	21	66.7	Form "A"	1.0
BT 40	SMH-BT40-16-40	16	38	40	17	66.7	Form "AD/B"	1.1
	SMH-BT40-22-40	22	48	40	19	66.7	Form "AD/B"	1.1
	SMH-BT40-27-40	27	58	40	21	66.7	Form "AD/B"	1.2
	SMH-BT40-32-50	32	78	50	24	66.7	Form "AD/B"	1.4
	SMH-BT40-40-50	40	88	50	27	66.7	Form "AD/B"	1.7
	SMH-BT40-16-100	16	38	100	17	66.7	Form "AD/B"	1.7
	SMH-BT40-22-100	22	48	100	19	66.7	Form "AD/B"	2.2
	SMH-BT40-27-100	27	58	100	21	66.7	Form "AD/B"	2.6
	SMH-BT40-32-100	32	78	100	24	66.7	Form "AD/B"	3.7
	SMH-BT40-16-160	16	38	160	17	66.7	Form "AD/B"	2.2
SMH-BT40-22-160	22	48	160	19	66.7	Form "AD/B"	3.0	
SMH-BT40-27-160	27	58	160	21	66.7	Form "AD/B"	3.8	
BT 50	SMH-BT50-16-63	16	38	63	17	101.6	Form "AD/B"	3.6
	SMH-BT50-22-63	22	48	63	19	101.6	Form "AD/B"	3.5
	SMH-BT50-27-63	27	58	63	21	101.6	Form "AD/B"	3.7
	SMH-BT50-32-60	32	78	60	24	101.6	Form "AD/B"	3.6
	SMH-BT50-40-60	40	88	60	27	101.6	Form "AD/B"	3.7
	SMH-BT50-60-80	60	129	80	40	66.7	Form "A"	8.5
	SMH-BT50-16-100	16	38	100	17	66.7	Form "AD/B"	4.0
	SMH-BT50-22-100	22	48	100	19	66.7	Form "AD/B"	4.3
	SMH-BT50-27-100	27	58	100	21	66.7	Form "AD/B"	4.7
	SMH-BT50-32-100	32	78	100	24	66.7	Form "AD/B"	5.8
	SMH-BT50-40-100	40	88	100	27	66.7	Form "AD/B"	6.4
SMH-BT50-22-160	22	48	160	19	66.7	Form "AD/B"	4.3	

- Coolant bore on the pilot face (holder with Form "AD/B") as standard for all holders
- Includes : Drive keys and clamping screw
- Special GPL Holders offered on request

Spare Parts & Accessories



pull stud



Drive Key



Spanner



clamping screw