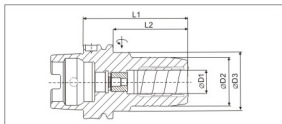


Hydro Grip HSK A50

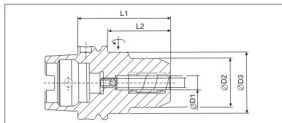


- Run-out accuracy < 0.003 at 2.5 x D
- Balanced for G6.3 @ 15,000 rpm

Specification	D1	D2	D3	L1	L2
HG-HSK-A50-06-70	6.0	26.0	40.0	70.0	44.0
HG-HSK-A50-08-70	8.0	28.0	40.0	70.0	44.0
HG-HSK-A50-10-75	10.0	30.0	40.0	75.0	49.0
HG-HSK-A50-12-85	12.0	32.0	40.0	85.0	59.0
HG-HSK-A50-14-85	14.0	34.0	40.0	85.0	59.0
HG-HSK-A50-16-90	16.0	38.0	53.0	90.0	64.0
HG-HSK-A50-18-90	18.0	40.0	57.0	90.0	64.0
HG-HSK-A50-20-90	20.0	42.0	60.0	90.0	64.0

Can be clamped with intermediate sleeves
Different sizes Offered on request

Hydro Grip HSK A63

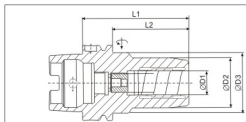


- Run-out accuracy < 0.003 at 2.5 x D
- Balanced for G6.3 @ 15,000 rpm

Specification	D1	D2	D3	L1	L2
HG-HSK-A63-06-70	6.0	26.0	50.0	70.0	44.0
HG-HSK-A63-08-70	8.0	28.0	50.0	70.0	44.0
HG-HSK-A63-10-80	10.0	30.0	50.0	80.0	54.0
HG-HSK-A63-12-85	12.0	32.0	50.0	85.0	59.0
HG-HSK-A63-14-85	14.0	34.0	50.0	85.0	59.0
HG-HSK-A63-16-90	16.0	38.0	50.0	90.0	64.0
HG-HSK-A63-18-90	18.0	40.0	50.0	90.0	64.0
HG-HSK-A63-20-90	20.0	42.0	50.0	90.0	64.0
HG-HSK-A63-25-120	25.0	57.0	63.0	120.0	94.0
HG-HSK-A63-32-125	32.0	64.0	75.0	125.0	99.0

Can be clamped with intermediate sleeves
Different sizes Offered on request

Hydro Grip HSK A100

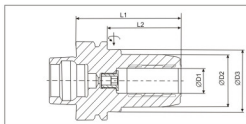


- Run-out accuracy < 0.003 at 2.5 x D
- Balanced for G6.3 @ 15,000 rpm

Specification	D1	D2	D3	L1	L2
HG-HSK-A100-06-75	6.0	26.0	50.0	75.0	46.0
HG-HSK-A100-08-75	8.0	28.0	50.0	75.0	46.0
HG-HSK-A100-10-90	10.0	30.0	50.0	90.0	61.0
HG-HSK-A100-12-95	12.0	32.0	50.0	95.0	66.0
HG-HSK-A100-14-95	14.0	34.0	50.0	95.0	66.0
HG-HSK-A100-16-100	16.0	38.0	50.0	100.0	71.0
HG-HSK-A100-18-100	18.0	40.0	50.0	100.0	71.0
HG-HSK-A100-20-105	20.0	42.0	50.0	105.0	76.0
HG-HSK-A100-25-110	25.0	57.0	63.0	110.0	81.0
HG-HSK-A100-32-110	32.0	64.0	75.0	110.0	81.0

Can be clamped with intermediate sleeves
Different sizes Offered on request

Hydro Grip HSK F63

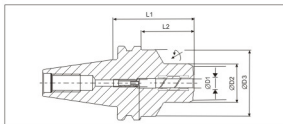


- Run-out accuracy < 0.003 at 2.5 x D
- Balanced for G6.3 @ 15,000 rpm

Specification	D1	D2	D3	L1	L2
HG-HSK-F63-20-85	20.0	42.0	50.0	85.0	59.0
HG-HSK-F63-25-85	25.0	50.0	50.0	85.0	59.0

Without length adjustment screw
Different sizes Offered on request

Hydro Grip SK 30

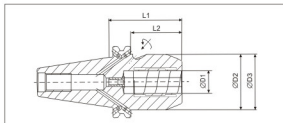


- Run-out accuracy < 0.003 at 2.5 x D
- Balanced for G6.3 @ 15,000 rpm

Specification	D1	D2	D3	L1	L2
HG-SK30-06-55	6.0	26.0	45.0	55.0	36.0
HG-SK30-08-55	8.0	28.0	45.0	55.0	36.0
HG-SK30-10-55	10.0	30.0	45.0	55.0	36.0
HG-SK30-12-55	12.0	32.0	45.0	55.0	36.0
HG-SK30-16-90	16.0	38.0	45.0	90.0	71.0
HG-SK30-20-90	20.0	42.0	45.0	90.0	71.0

Can be clamped with intermediate sleeves
Different sizes Offered on request

Hydro Grip SK 40

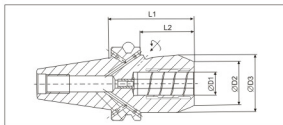


- Run-out accuracy < 0.003 at 2.5 x D
- Balanced for G6.3 @ 15,000 rpm

Specification	D1	D2	D3	L1	L2
HG-SK40-06-80.5	6.0	26.0	49.5	80.5	61.5
HG-SK40-08-80.5	8.0	28.0	49.5	80.5	61.5
HG-SK40-10-80.5	10.0	30.0	49.5	80.5	61.5
HG-SK40-12-80.5	12.0	32.0	49.5	80.5	61.5
HG-SK40-16-80.5	16.0	38.0	49.5	80.5	61.5
HG-SK40-20-80.5	20.0	42.0	49.5	80.5	61.5
HG-SK40-25-80.5	25.0	55.0	66.0	80.5	61.5
HG-SK40-32-80.5	32.0	63.0	80.0	80.5	61.5

Can be clamped with intermediate sleeves
Different sizes Offered on request

Hydro Grip JIS-BT 40

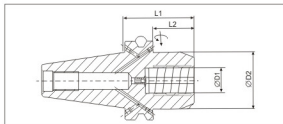


- Run-out accuracy < 0.003 at 2.5 x D
- Balanced for G6.3 @ 15,000 rpm

Specification	D1	D2	D3	L1	L2
HG-BT40-06-90	6.0	26.0	44.5	90.0	63.0
HG-BT40-08-90	8.0	28.0	44.5	90.0	20.0
HG-BT40-10-90	10.0	30.0	44.5	90.0	25.5
HG-BT40-12-90	12.0	32.0	44.5	90.0	30.5
HG-BT40-16-90	16.0	38.0	44.5	90.0	35.0
HG-BT40-20-90	20.0	42.0	44.5	90.0	37.8
HG-BT40-32-83	32.0	63.0	80.0	83.0	47.0

Can be clamped with intermediate sleeves
Different sizes Offered on request

Hydro Grip JIS-BT 50



- Run-out accuracy < 0.003 at 2.5 x D
- Balanced for G6.3 @ 15,000 rpm

Specification	D1	D2	L1	L2
HG-BT50-12-69	12.0	42.0	69.0	31.0
HG-BT50-20-83.5	20.0	49.25	83.5	45.5
HG-BT50-32-90	32.0	72.0	90.0	52.0

Can be clamped with intermediate sleeves
Different sizes Offered on request